



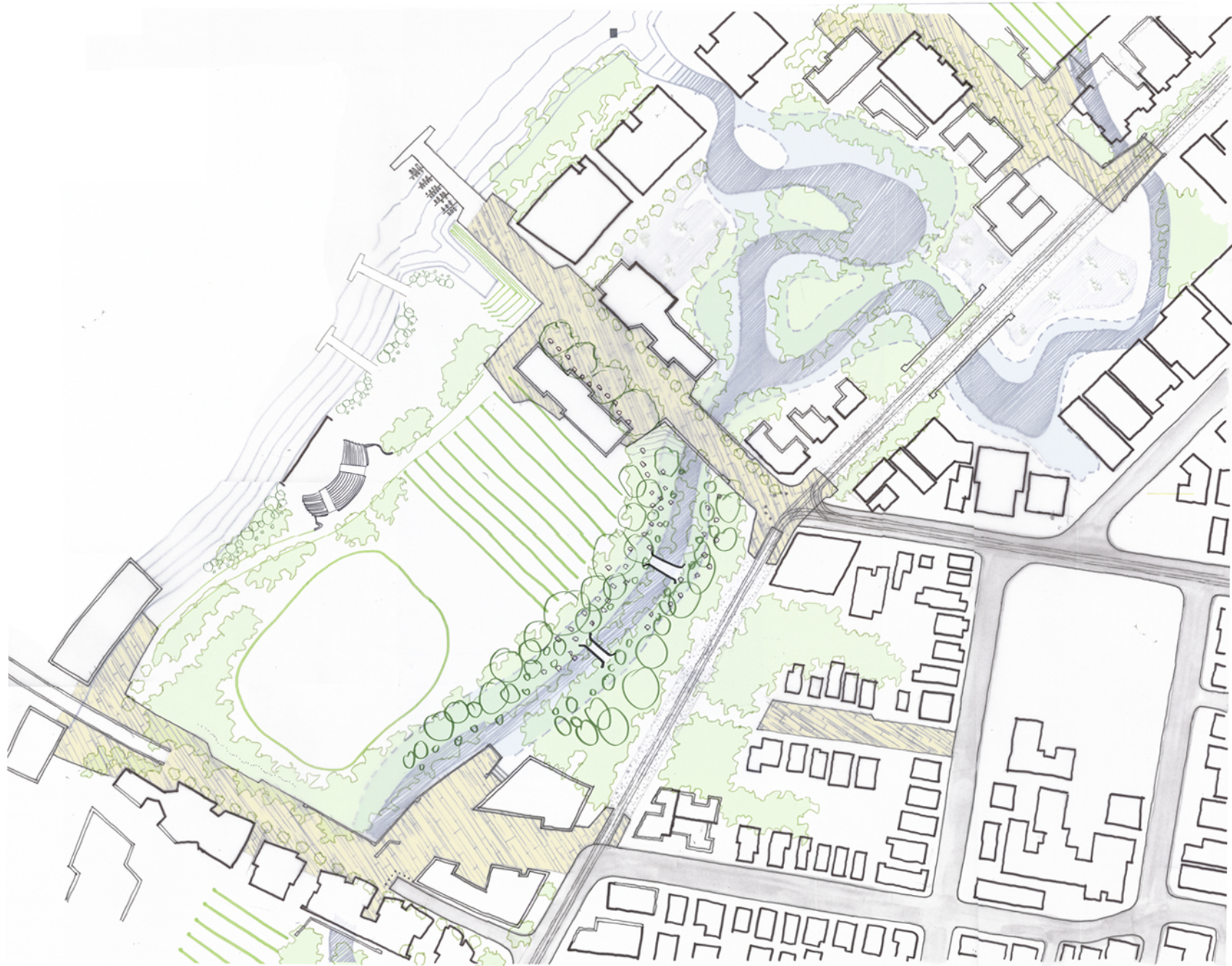
GROUP 1 West End Site Analysis:
Patricia Davy, Will Downes, Louisa Gee,
Daniel Homewood, Felicity Mills, Mmusi Kalayakgosi, Nik Strugar, Ian Tsui



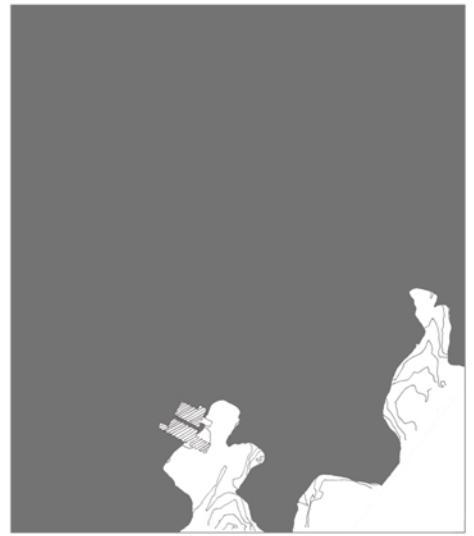
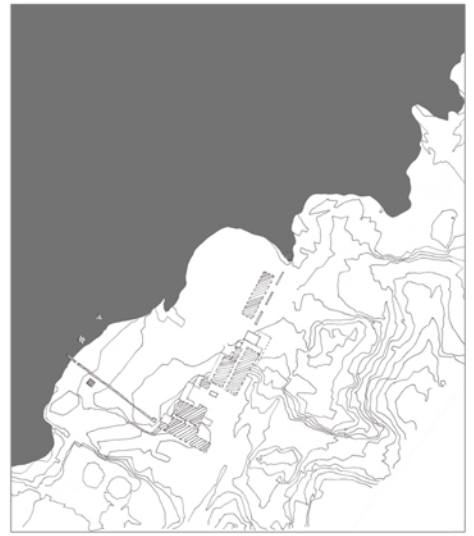
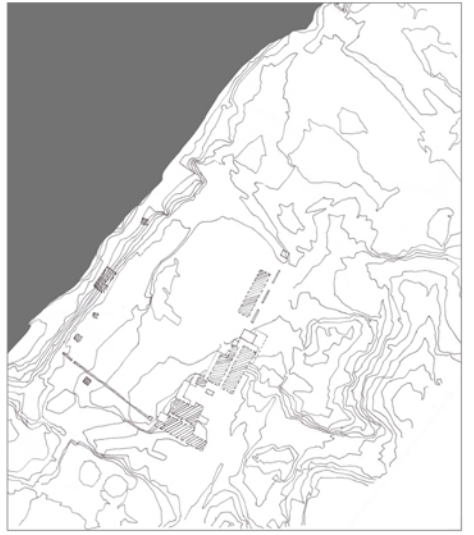
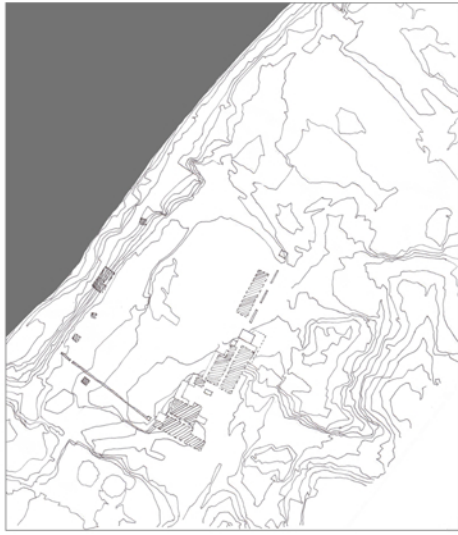
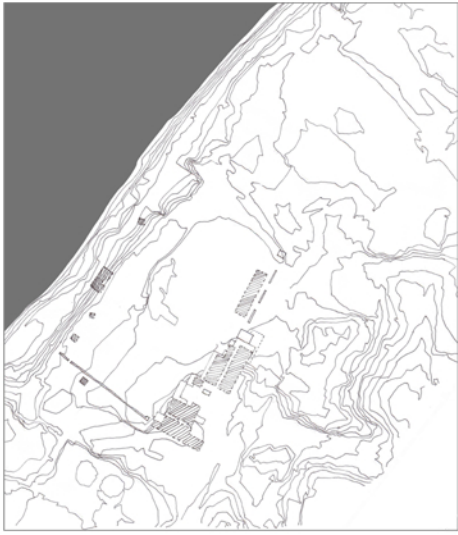
The Sedimentary City
Davies Park, West End

GROUP 1: West End Site Analysis:

Patricia Davy, Will Downes, Louisa Gee, Daniel Homewood
Felicity Mills, Mmusi Kalayakgosi, Nik Strugar, Ian Tsui



GROUP 1: West End Site Analysis:
Patricia Davy, Will Downes, Louisa Gee, Daniel Homewood
Felicity Mills, Mmusi Kalayakgosi, Nik Strugar, Ian Tsui

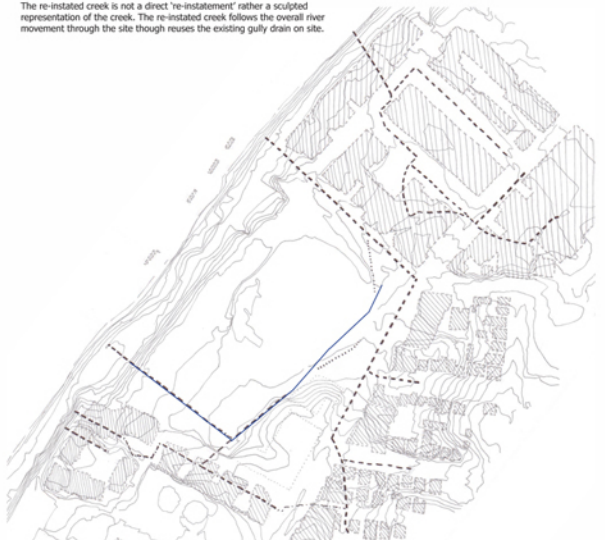




1 : 2000
Context site plan



Creek re-instatement
The re-instated creek is not a direct 're-instatement' rather a sculpted representation of the creek. The re-instated creek follows the overall river movement through the site though reuses the existing gully drain on site.



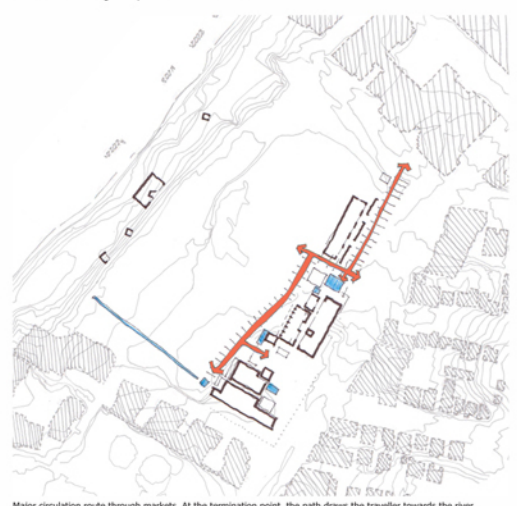
Current storm water & drainage positions
Red line indicates the general position of creek re-instatement.



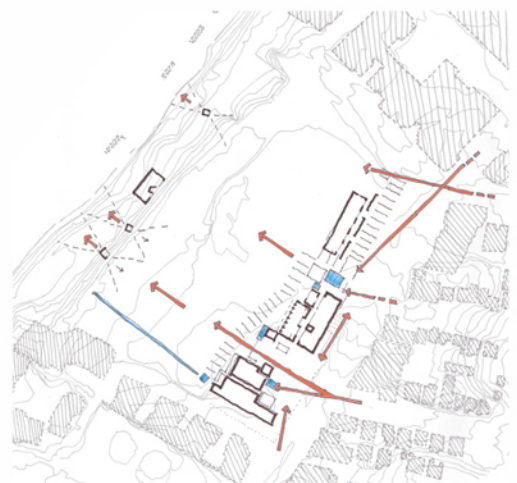
Urban Fabric -
Dictates the change of view at the street nodes of Jane St. and Culture St.
Strong Montague Road Spine set up by existing urban fabric.



Urban Fabric Analysis -
Circulation into Davies Park



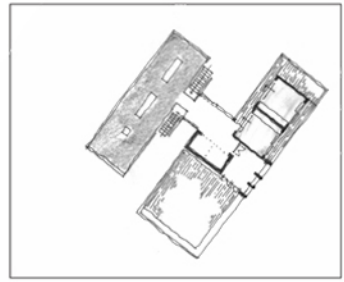
Major circulation route through markets. At the termination point, the path draws the traveller towards the river.



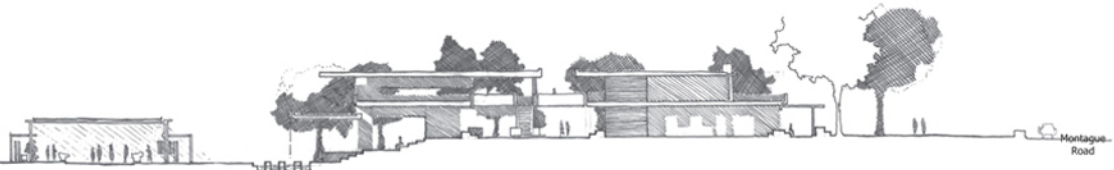
Main view axes on approach to Davies Park



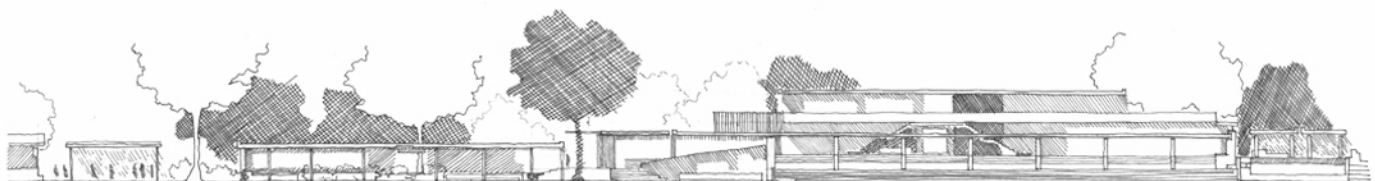
- 1:500 - Plan**
Proposed Culture and Food Exchange
- 01 Residential microhousing
 - 02 Auditorium
 - 03 Entry Courtyard & spillout space
 - 04 Exhibition Space and park observation plinths
 - 05 Circulation Core
 - 06 Library / Research Centre
 - 06 Cultural Exchange Entry & Offices
 - 06 Reception & Administration
 - 07 Storage Facility
 - 08 Cultural centre entry courtyard
 - 09 Administration / Reception
 - 10 Dining & Kitchenette
 - 11 Demonstration Centre
 - 12 Internal Markets
 - 13 External Market
 - 14 Vegetable Garden
 - 15 Open park space
 - 16 Observation / retreat room
 - 17 Sporting oval
 - 18 North Entry
 - 19 Back of house services access
 - 20 Public street-side seating area



1:500
Second Floor Plan



1:200 - Section A
Cultural Exchange



1:200 - West Elevation 1 (Part)
Cultural Exchange



Gateways symbolise moments when moving through the landscape.



Entry portals indicate movement through different thresholds.



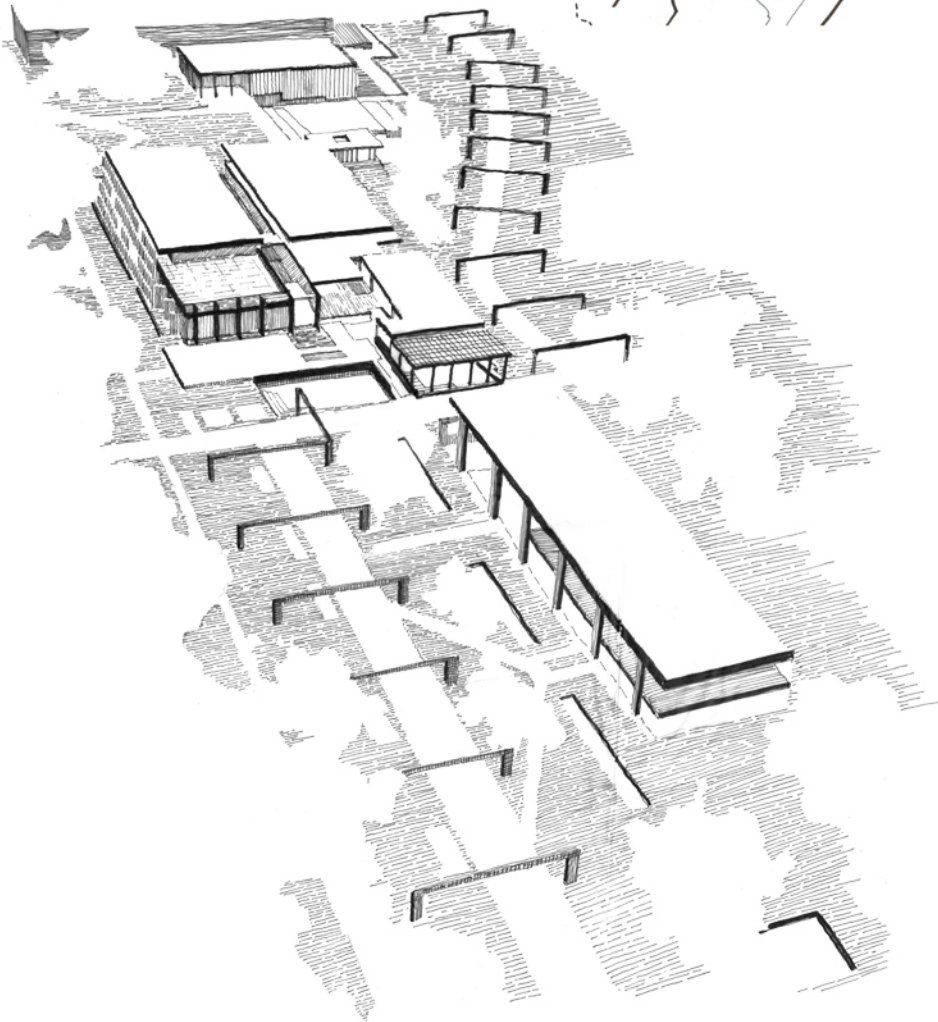
Outdoor market arcades - Balçachins help create the illusion of a smaller space within a larger environment.



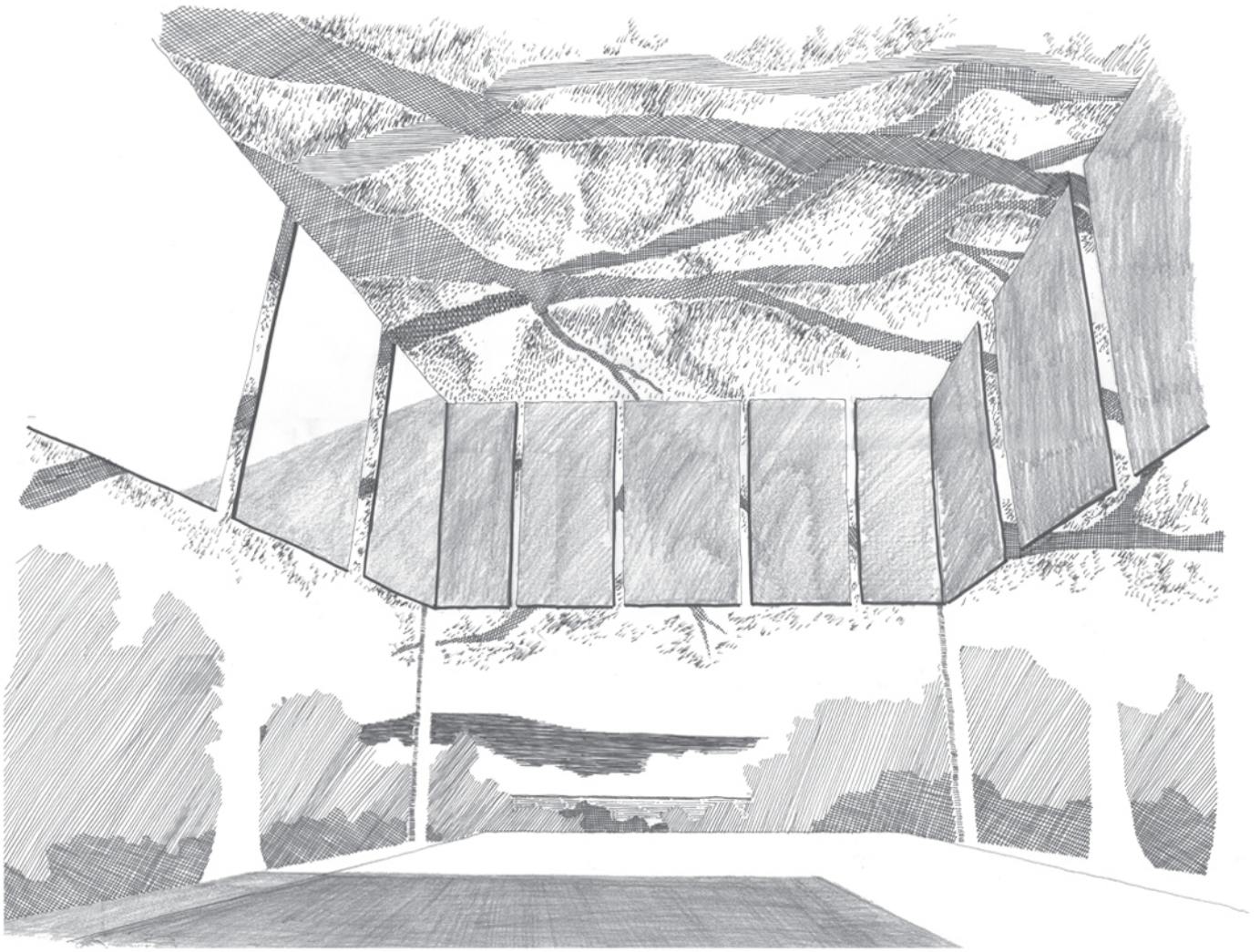
Controlled drainage system.



- 1:1000**
Site Plan
- 01 Residential microhousing
 - 02 Auditorium
 - 03 Entry Courtyard
 - 04 Exhibition Space and park observation plinths
 - 05 Library, Amenities, Storage & Services
 - 06 Cultural Exchange Entry & Offices
 - 07 Reception & Administration
 - 08 Cultural Exchange Entry
 - 09 Dining area & Kitchennette
 - 10 Demonstration Centre
 - 11 Internal markets Centre
 - 12 External markets avenue
 - 13 Containers of water
 - 14 Sporting Oval
 - 15 Vegetable Garden
 - 16 Open park space
 - 17 Water Exchange
 - 18 Public amphitheatre with stage
 - 19 Pavilions / Retreat space
 - 19 Creek Flow Path



1:200 - Section C
Open space threshold edge



Internal Perspective



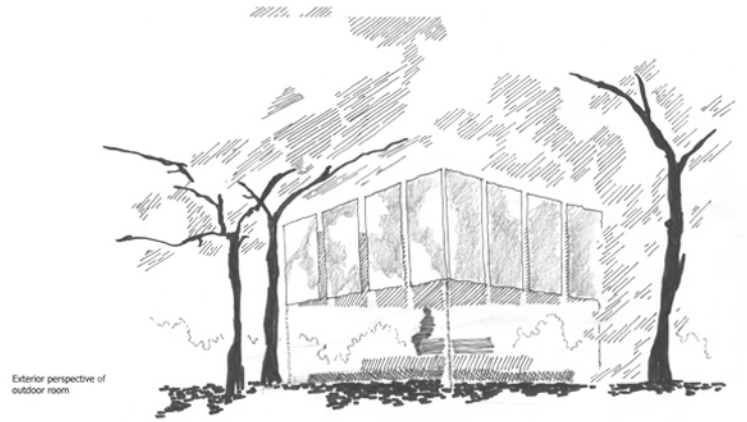
Views to Mount Cootha from forest



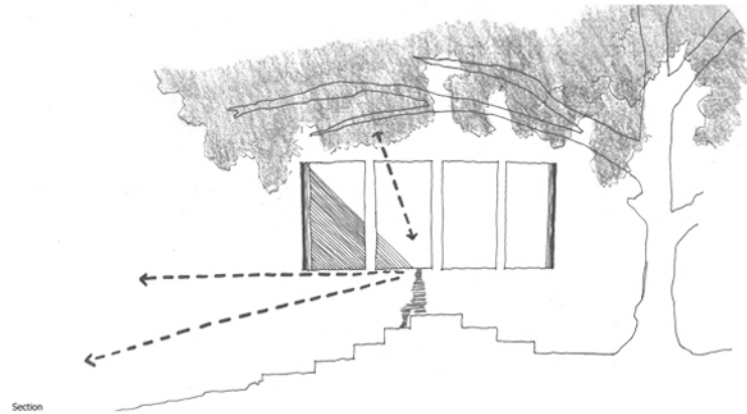
Views to Mount Cootha from forest



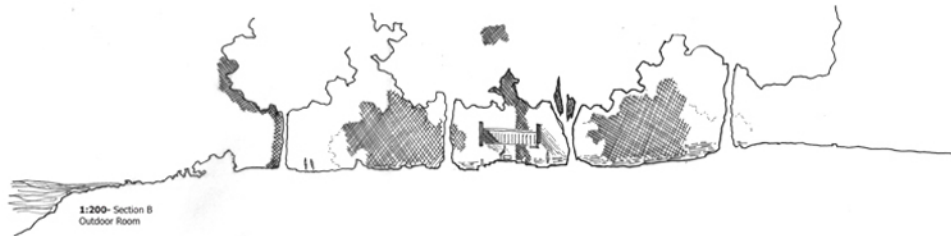
Views to the city



Exterior perspective of outdoor room



Section



1:200- Section B
Outdoor Room



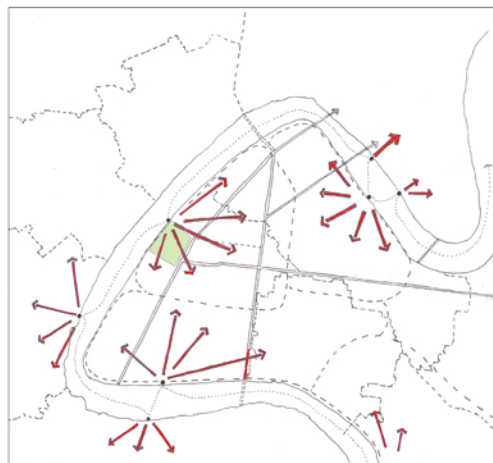
1 : 10000
 Site Context
 Centralised location within West End, with river views. Park is a rare large segment of public green space within the suburban built environment.



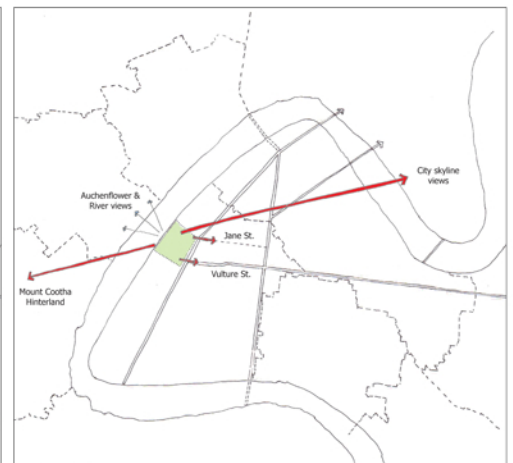
1 : 10000
 Phase 1
 Restoring Montague Road into a pedestrian street and continuing the avenue of trees along Montague Road



Major circulation routes -
 Montague Road, Jane Street, Vulture Street, and Boundary Street
 The junctions of Jane Street and Montague Road and Vulture Street and Montague Road are important



Brisbane River transport infrastructure -
 Additional West End City Cat stop will make Davies Park as a transport node and improve the overall connectivity and servicing of West End suburbs



Davies Park - Views out
 Views of Mount Coottha, the Brisbane river, the city skyline and residential avenues



Proposed Future Plan - Phase 1 -
 Introducing vegetation along Montague Road, reinforcing the connection of the connection back to the city through Tank Street Bridge located north. Buildings neighbouring the site to be removed.



Proposed Future Plan - Phase 2 -
 Building setbacks to commence, Montague Road revitalisation to extend North and South, reinforcing the connection between the city and Davies Park, and the reference of Montague road back to the River



Proposed Future Plan - Phase 3 -
 Buildings to be setback from the Brisbane River, the building mass to be aligned to Montague road, greenpaces to extend the entire length of West End, returning the river edge to the community. Revitalisation to continue into the urban fabric of West End. Davies Park building form responds to the phasing process.

